

Springfield School District



**EDUCATIONAL
PROGRAMMING
NEEDS**

Information on Educational Programming Needs

Educational Programming Needs Brought Forward related to Physical Plant Building Limitations:

EDUCATIONAL PROGRAMMING NEEDS

- *Career and Tech Education programming
- *Locker room/shower conditions are inadequate and not ADA compliant
- *Elementary play and elementary physical activities are greatly limited by green space and recess options
 - *East lawn & Browns Park turn to ice/mud in spring
 - *1926 gymnasium can not hold the amount of elementary students for indoor recess use (200+ bodies)
- *Elementary afterschool youth programs practice later than any other students due to lack of available gym space
- *Space for ECFE, Community Education, and afterschool programming activities is needed
- *Health and fitness space limitations
- *Cafeteria size and serving times
- *General PreK-12 programming to allow for flexible space and personalized learning
- *Music and band classrooms
- *Theatre dressing rooms

The committee reviewed concepts that would equip our school to better meet educational programming needs for our children.

The next few slides and pictures will help articulate some of these concerns and why they need to be addressed.

Career and Technical ED(CTE) Programming Needs

This is the committee rationale for addressing CTE needs .

EDUCATIONAL PROGRAMMING NEEDS

Expand and Update the Career and Technical Education (CTE) Lab

There is a growing demand for employees in the construction, manufacturing, engineering, automotive, and design trades in our region. However, our current Career and Technical Education (CTE) lab is too small and in need of expansion to improve safety and support new equipment. Currently, equipment needs to be rotated into the lab for various classes and students are required to work outside (even in the winter months) due to the space shortage. The District would like to renovate and expand this space in order to:

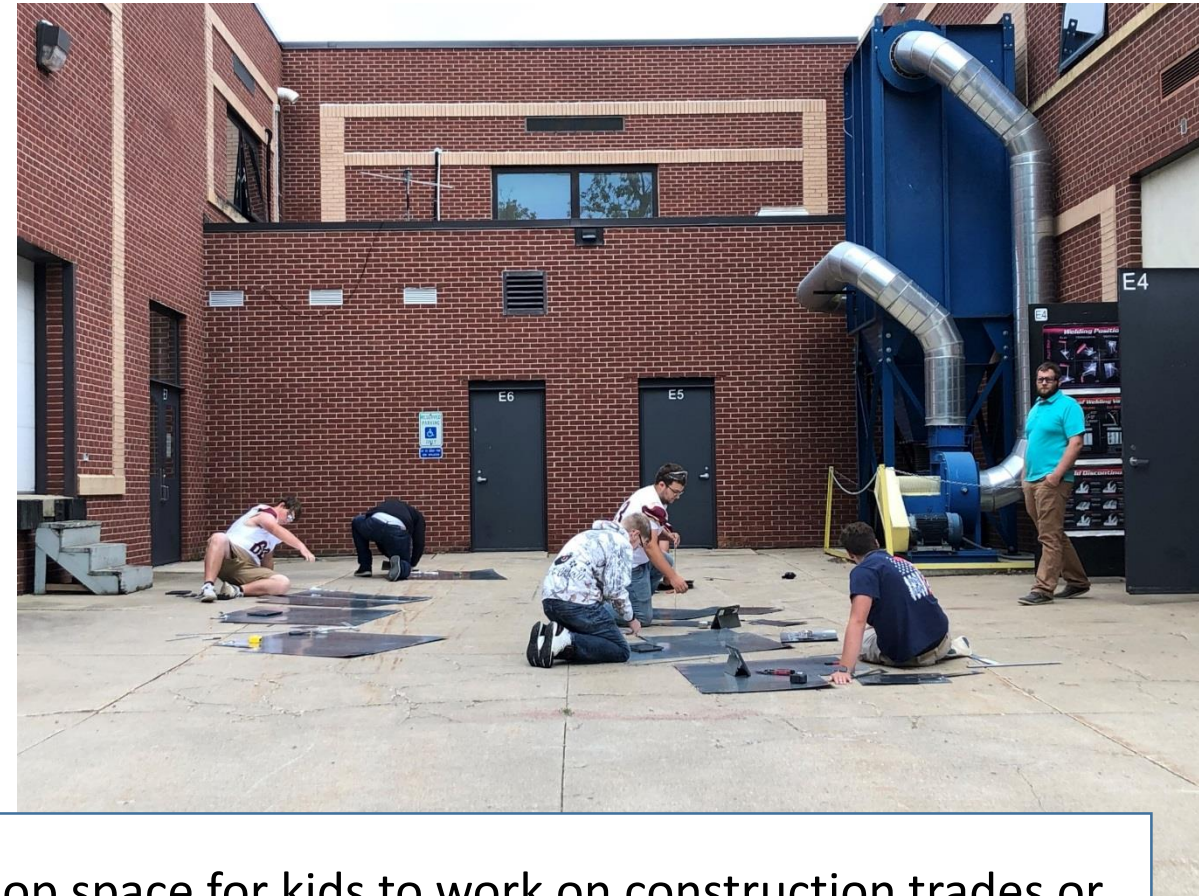
- Expand course offerings to meet student interest and workforce demands
- Incorporate the latest tools and equipment
- Provide more job-like, project-based experiences
- Improve safety

We hope the following slides can articulate the facility needs as well.

Career and Technical Programming Needs

EDUCATIONAL PROGRAMMING NEEDS

Here we have a student working on framing their “goat” shed. A closer look you would see their footprints in the snow drift. That day this student was wearing dress shoes as he had a basketball game that night.



The Need- Indoor shop space for kids to work on construction trades or manufacturing projects.

Career and Technical Programming Needs



EDUCATIONAL PROGRAMMING NEEDS

Here are our students checking their vehicles fluids outside the metals area and on the street since we do not have a “bay” for auto/general mechanics.

The Need- Indoor shop space for automotive/mechanics programming.

Career and Technical Programming Needs



EDUCATIONAL PROGRAMMING NEEDS

Tire balancing and other automotive tools/equipment are in the wood storage area further complicating the use of that space.

The Need- Shop space dedicated to automotive/mechanics programming.

Career and Technical Programming Needs



EDUCATIONAL PROGRAMMING NEEDS

This is our metals shop. Students have to clear the floor area to allow for construction trades projects. This space becomes even more complicated and overcrowded when students are building our “Super mileage Car.”

The Need- additional shop space for larger construction projects.

Career and Technical Programming Needs

EDUCATIONAL PROGRAMMING NEEDS



The Need- shop space for construction trade programming.

This is our woods shop. To learn construction trades this shop becomes unusable for other classes, specifically junior high woodworking. There is a need to provide a better and more functional learning environment for these important career opportunities.

Repurposing the 1926 Gym as a Career and Tech Ed Space.

Examples of what repurposing the gym space could mean for CTE programming that takes place over late fall and winter months.



Auto-shop Example

**EDUCATIONAL
PROGRAMMING
NEEDS**

**NORTHERN CLIMATE HIGH SCHOOLS AND VO-TECHS HAVE
INDOOR SHOP SPACE FOR TEACHING AND LEARNING
THESE TRADES**



Construction Trades
Shop Example

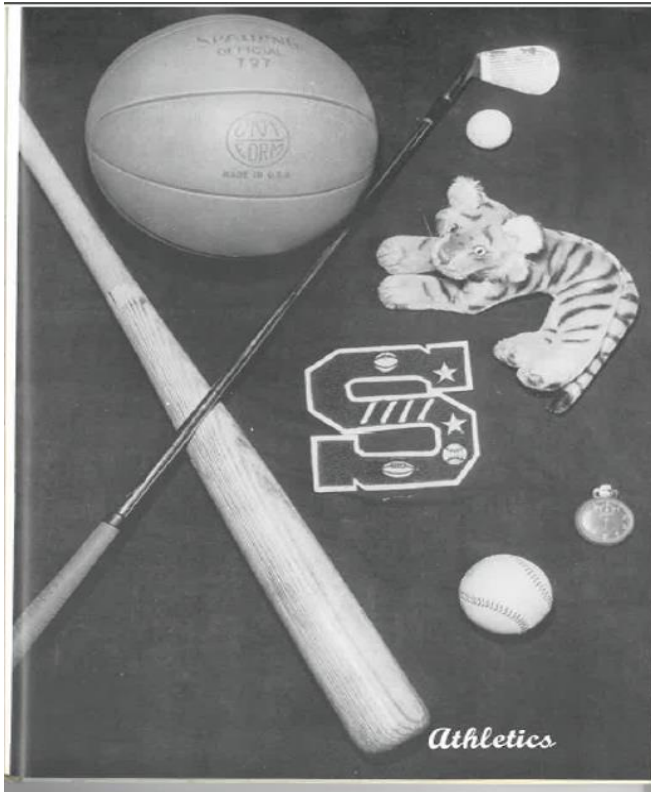
Gym Space Demands and Programming Needs

Gym Space Programming Needs-Then and Now

EDUCATIONAL PROGRAMMING NEEDS

1961 is the last update to our gymnasium programming spaces.

You may be shocked at the disparity that exists between the demand then vs. today.



1961 and 2019 Programming Comparisons

1961

Year our current competition
gymnasium was built

Activity

Level

Football	Varsity
Boys' Basketball	Varsity
Boys' Basketball	B-Squad
Boys' Basketball	8th Grade
Boys' Basketball	7th Grade
Baseball	Varsity
Boys' Track	Varsity
Boys' Golf	Varsity
Cheer Squad	

← 1961 vs Today →

Here is a side by side comparison between
programs offered in 1961 vs. 2019

The Need- additional gym space. Youth programs are in demand and these youngest learners have limited availability to gym space and practice the latest at night.

2019 Activity	Level
Volleyball	Varsity
Volleyball	B-Squad
Volleyball	C-Squad
Volleyball	8th grade
Volleyball	7th grade
Football	Varsity
Football	B-Squad
Football	8th grade
Football	7th grade
Cross Country Girls'	Varsity
Cross Country Girls'	Junior High
Cross Country Boys'	Varsity
Cross Country Boys'	Junior High
Girls' Tennis	Varsity
Girls' Tennis	Junior High
Girls' Basketball	Varsity
Girls' Basketball	B-Squad
Girls' Basketball	C-Squad
Girls' Basketball	8th grade
Girls' Basketball	7th grade
Girls' Basketball	6th grade
Girls' Basketball	5th grade
Girls' Basketball	4th grade
Boys' Basketball	Varsity
Boys' Basketball	B-Squad
Boys' Basketball	C-Squad
Boys' Basketball	8th grade
Boys' Basketball	7th grade
Boys' Basketball	6th grade
Boys' Basketball	5th grade
Boys' Basketball	4th grade
Wrestling	Varsity
Wrestling	Junior High
Wrestling	Elementary
Girls' Track	Varsity
Girls' Track	Junior High
Boys' Track	Varsity
Boys' Track	Junior High
Girls' Golf	Varsity
Girls' Golf	Junior High
Boys' Golf	Varsity
Boys' Golf	Junior High
Softball	Varsity
Softball	B-Squad
Softball	Junior High
Baseball	Varsity
Baseball	B-Squad
Baseball	8th grade
Baseball	7th grade
Early Childhood Family Ed.	Family Gym Night
Community Education	Various Activities-Yoga, etc.
JO Volleyball	Varsity
JO Volleyball	B-Squad
JO Volleyball	9th grade
JO Volleyball	Junior High
JO Volleyball	6th grade
JO Volleyball	5th grade
JO Volleyball	4th grade

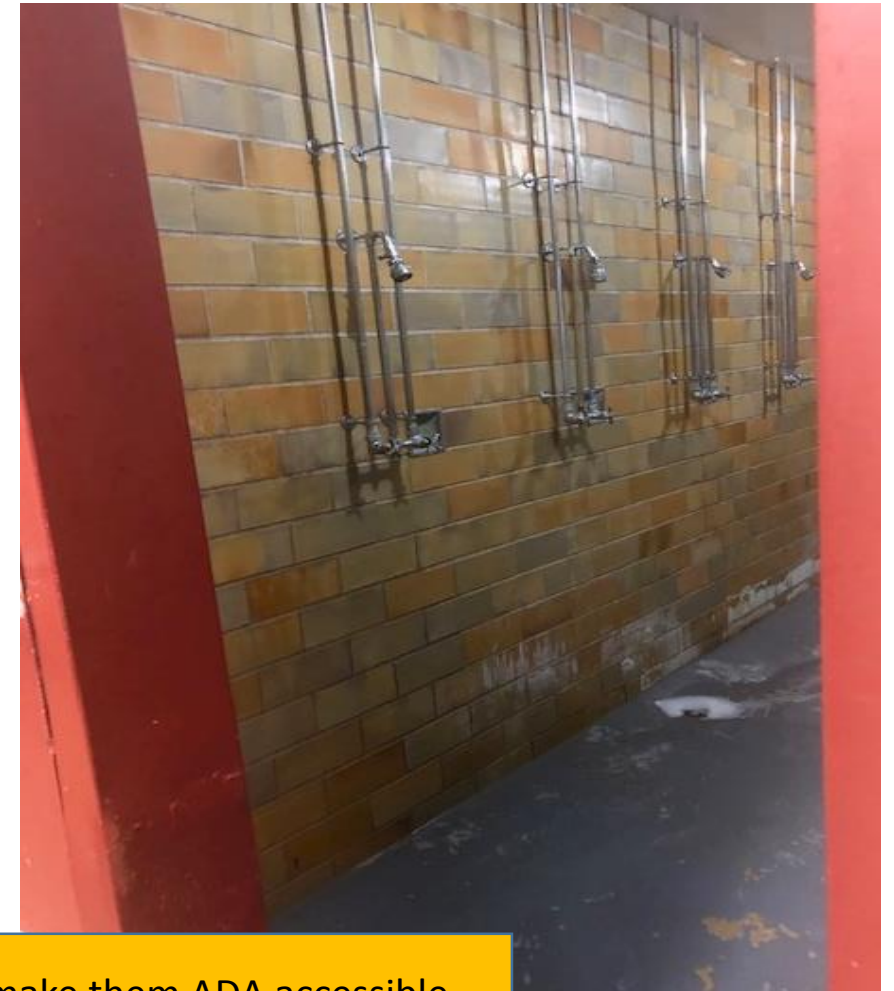
**EDUCATIONAL
PROGRAMMING
NEEDS**

LOCKER ROOM UPDATES

EDUCATIONAL PROGRAMMING NEEDS

These are actual photos of the high school physical education and varsity team locker room showers. Updating our shower areas are greatly needed. The district has improved the lockers and changing area, but the shower area will need improved ventilation, plumbing fixtures, and wall surfacing.

Kids have stated that they would shower more frequently at school, if they were improved.

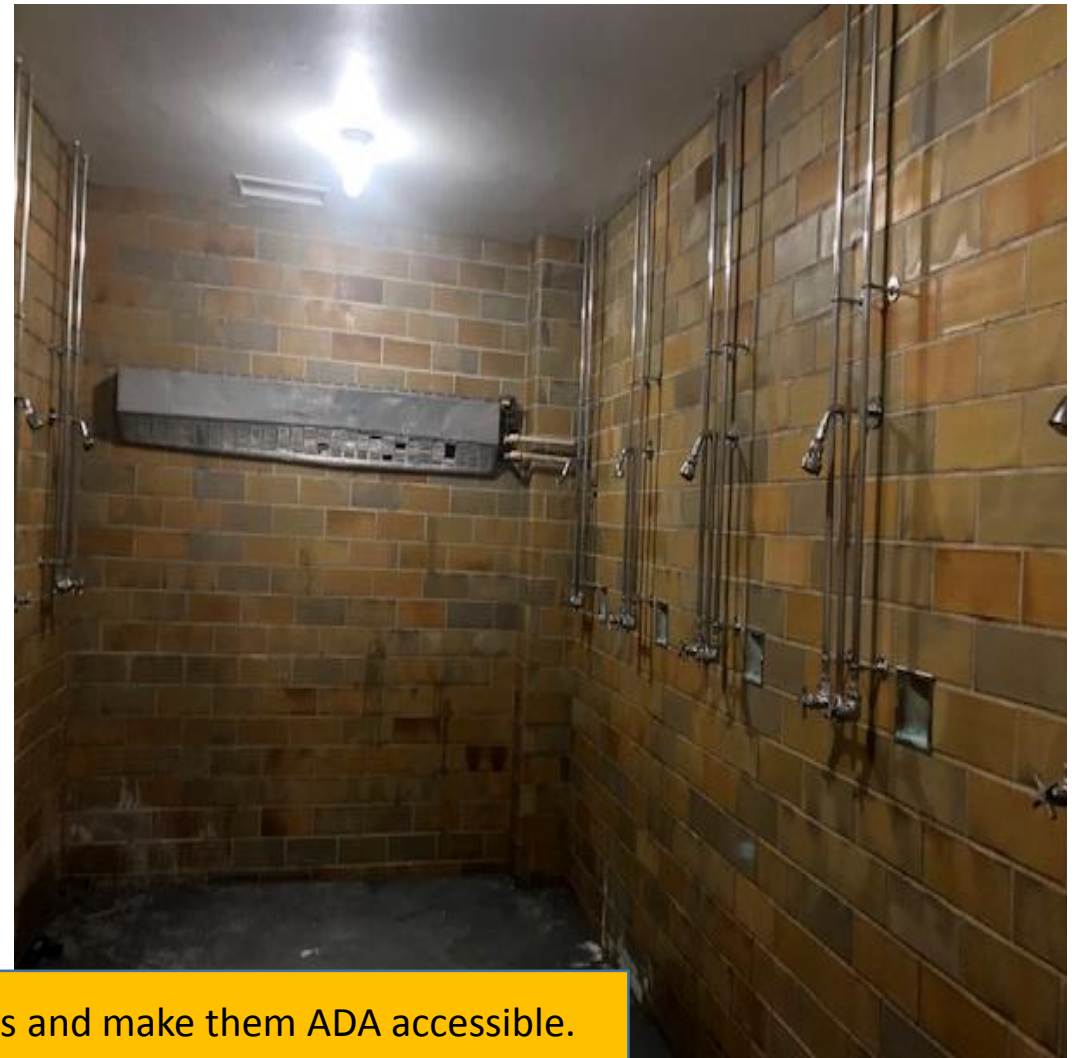
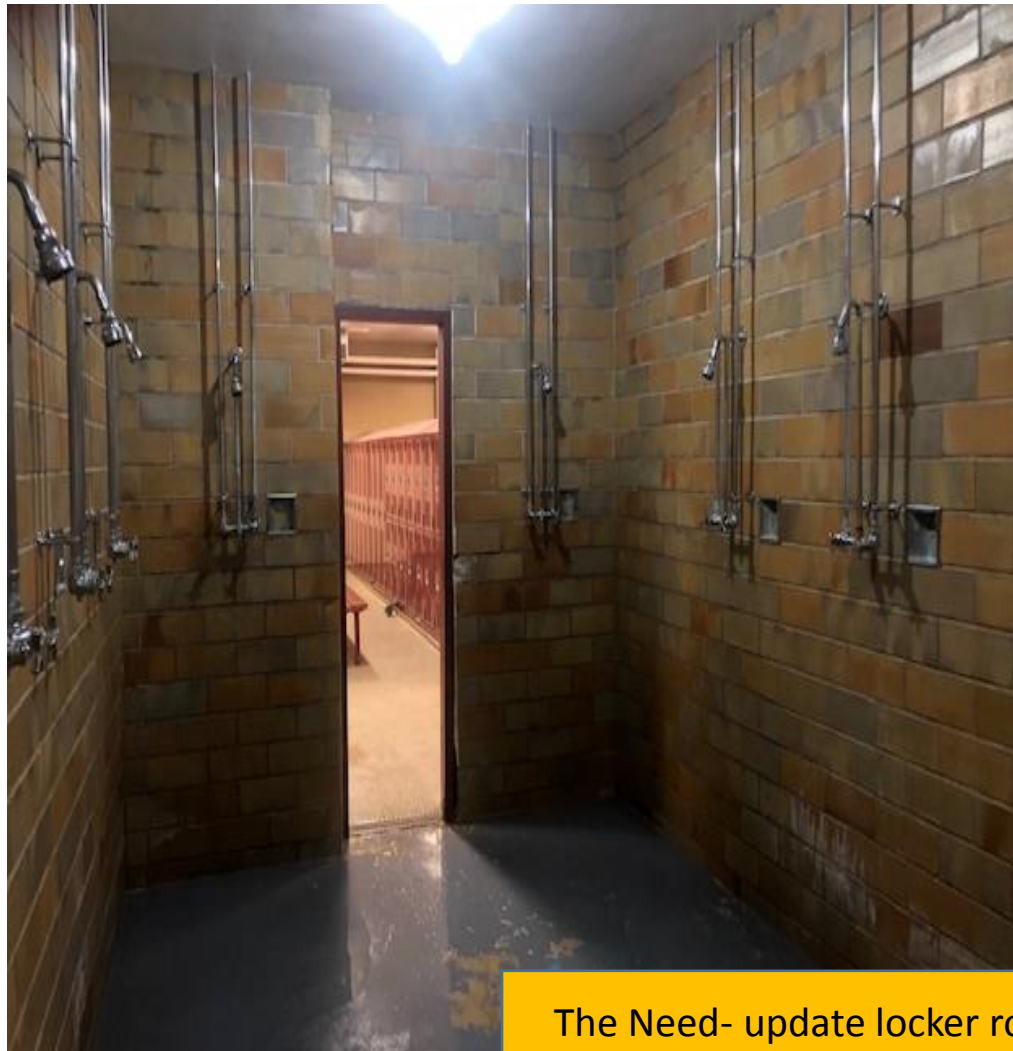


The Need- update locker rooms and make them ADA accessible.

LOCKER ROOM SHOWERS

EDUCATIONAL
PROGRAMMING
NEEDS

Showers area looking out



The Need- update locker rooms and make them ADA accessible.

LOCKER ROOM UPDATES

EDUCATIONAL
PROGRAMMING
NEEDS

Update Locker Rooms

The existing locker rooms have plumbing and fixtures that need to be replaced and do not meet current Americans with Disabilities Act (ADA) code requirements. In addition, visiting team locker rooms need to be built.



Locker Room Examples

The Need- update locker rooms and make them ADA accessible.

CROWDED CAFETERIA

This school cafeteria has served most students that have attended Springfield for the past 50 years. It has been undersized and widely utilized from the onset.

Today, salad bars are offered and have to be located outside of the kitchen, taking away more floor space for seating. Added demands have resulted from all-day every day kindergarten and restricting high schoolers to go downtown for lunch.

Space provides for cramped conditions and elementary students are cycled through on 20 minute intervals with earliest serving time is 10:45 a.m. and the last lunch ending at 1:00 p.m.

For the cafeteria to physically expand, it would need to push out into the choir classroom. This would create a need to relocate or add a new choir space on campus.

**PROGRAMMING
NEEDS
EDUCATIONAL**



The Need- Additional cafeteria space.

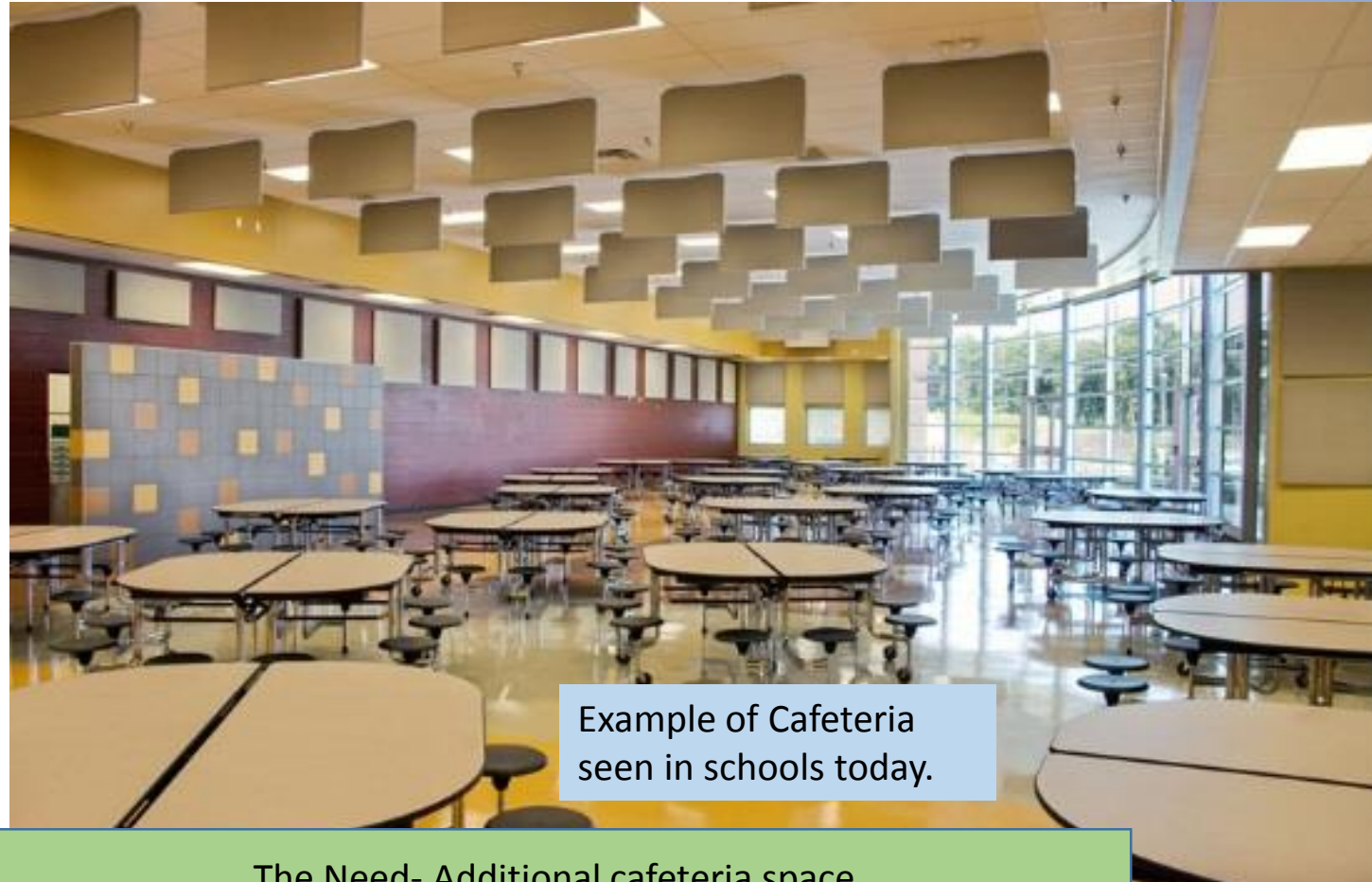
CROWDED CAFETERIA

Expand the Cafeteria

The cafeteria is used daily and creates difficulties in effectively meeting our student's needs. Due to the lack of seating, lunch is served beginning with kindergartners eating as early as 10:45 a.m. and the oldest students as late as 12:55 p.m. In addition, the cafeteria's current size does not work well for large group activities/instruction nor for use as a community early childhood and parent education gathering space.

The District would like to:

- Build a larger cafeteria that would extend into the adjacent choir room maximizing its' capacity
- Include flexibility in its design to serve as a commons area for student collaboration and studying after school
- Design the space to also be used for large group activities by the school and community



Example of Cafeteria
seen in schools today.

The Need- Additional cafeteria space.

Music Classroom

Choir Classroom

Projects would address Cafeteria and Choir capacity as well as the needed locker room renovation. The cafeteria would expand into the current Choir Room(CHR) by renovating the old locker rooms into an updated Choir Room. This would require new locker rooms be added on the new east addition. The cost to build new locker rooms was minimally different between renovating the old locker rooms and integral in simultaneously meeting the Cafeteria & Choir needs in the most cost efficient way.

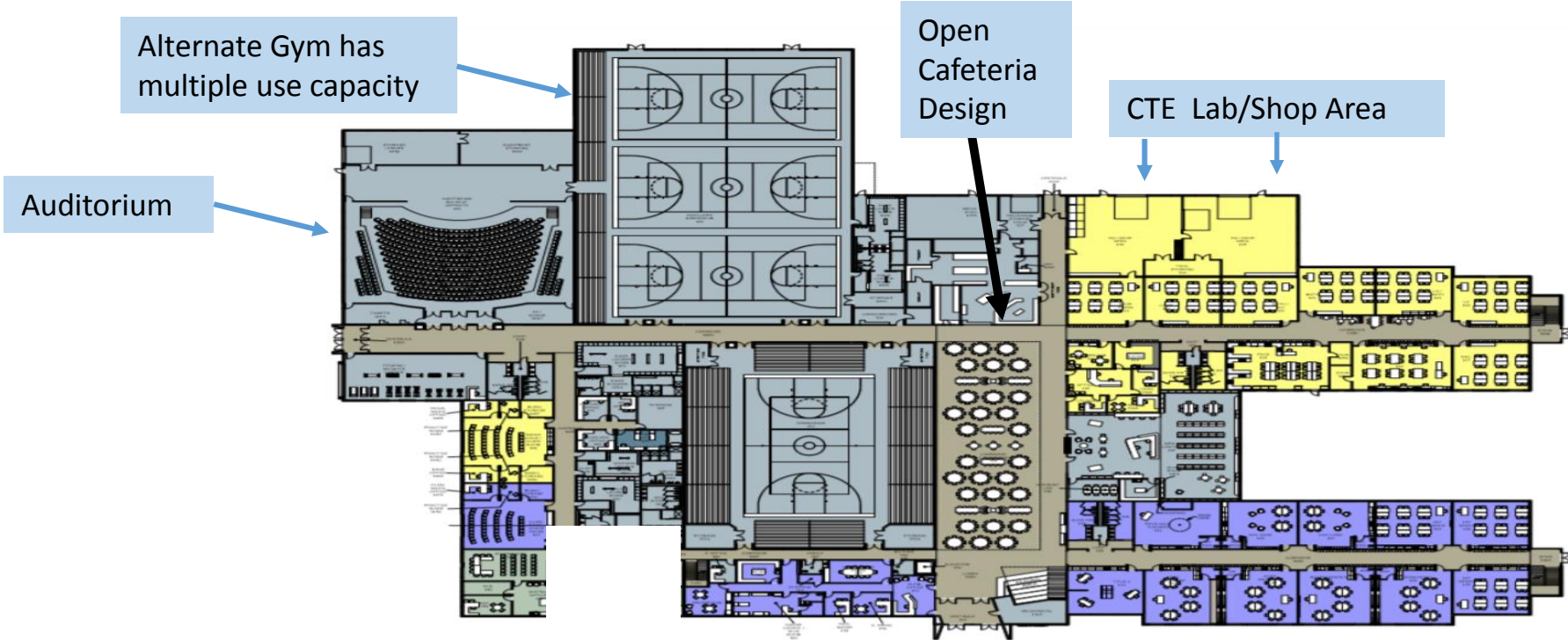
**EDUCATIONAL
PROGRAMMING
NEEDS**



New School Designs Used Today address CTE, Gym, and Cafeteria Needs

Here is the design for the new K-12 school. You may notice that the design includes added CTE shop spaces, auditorium, an alternate gym with more than 1 court, 1 main competition gymnasium, and an open cafeteria space that will also be used as a gathering place for community and parent education programming. This design is in response to the programming demands placed upon these spaces .

EDUCATIONAL PROGRAMMING NEEDS



Facility Task Force Recommendation to address Educational, Youth, Early Childhood, and Community Programming Needs

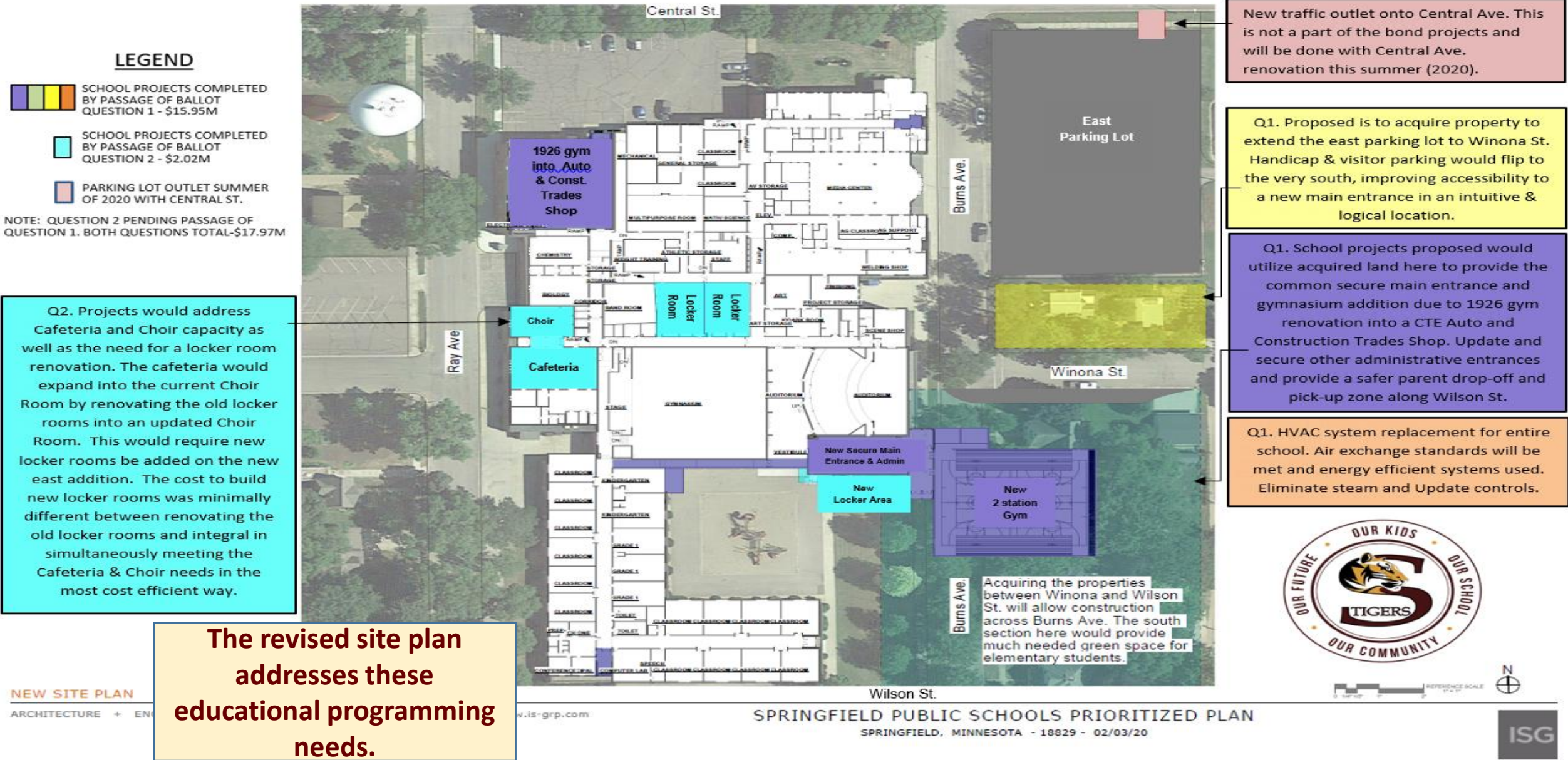
*Consensus of this committee is to address the buildings limitations to address these needs by the following:

- a) Repurpose the 1926 Gymnasium to house CTE programming lab/shop space
- b) Add a gymnasium that has twice the capacity of the 1926 gymnasium to better serve the programs provided for students today.
- c) Construct new locker rooms and ADA compliance as the cost difference between building new and renovating the old locker rooms was minimal. This would allow the school to then address the following two items.
- d) Expand Cafeteria size to include the current K-12 Choir room.
- e) Renovating existing locker rooms to relocate and expand the K-12 Choir room.

**EDUCATIONAL
PROGRAMMING
NEEDS**

School Site Plan Addresses Programming Needs.

SPRINGFIELD SCHOOL PRIORITIZED SITE PLAN



Springfield School District



If you have any questions, please don't hesitate to contact:

Keith Kottke

Superintendent

507-723-4283

keith.kottke@springfield.mntm.org